



[Click here to visit the TABA Homepage!](#)

On The Level - TABA On The Level December 2014

Contents:

- [TABA Calendar](#)
- [2015 Board of Directors and 2014 Awards](#)
- [City of Temple 2015 DRC Schedule](#)
- [2015 Home and Garden Show](#)
- [Membership Corner](#)
- [Temple and Belton Permit Statistics](#)
- [HomePAC](#)
- [Spike Club](#)

Mark your calendars now for the below TABA Events and stay tuned for additional 2015 Event dates in the coming weeks!

The TABA Calendar is always available at www.tahb.org/events

2015 Events

- February 20 - 22 [Home & Garden Show](#) (Bell County Expo Center)
- March 4 Rally Day (Texas State Capitol)
- March 27 Crawfish Boil Event
- April 17 - 19 [Parade of Homes](#) (Weekend 1)
- April 24 - 26 [Parade of Homes](#) (Weekend 2)

[On The Level - Table Of Contents](#)

<p>Don Ringler CHEVROLET TOYOTA ACURA Let's Go Places www.DonRinglerAutos.com</p>	<p>ACME BRICK Since 1891 5200 S. General Bruce Dr. Office 254-778-8088 Temple, TX Fax 254-778-2279</p>	<p>Kohutek Engineering & Testing, Inc. CONSULTING ENGINEERS Gordon L. Kohutek, P.E. President 3200 East University Avenue, Georgetown, TX 78626 toll free 512-930-5832 • fax 512-930-5852</p>
<p>Home Loans Construction Loans</p> <p>Extraco Banks. Extraordinary Starts Here Member FDIC extracobanks.com 254-774-5900</p>	<p> Gold Star Cabinets & Countertops </p> <p>Granite, Quartz, Solid Surface, Showers Office #: 512-251-9279 Fax #: 512-251-4445 Email: gscabs@gmail.com Account Reps: Andrew Keown/ John Wells/ Dale Murrow www.goldstarcabinets.com</p>	<p>tBi TEXAS BRIGHT IDEAS Lighting - Window Coverings Ceiling Fans - Builders Hardware HARKER HEIGHTS GEORGETOWN 254-699-2509 512-930-2005 EMAIL TBi@HOT.RR.COM • WWW.TEXASBRIGHTIDEAS.COM</p>

Thanks to everyone who came out for the 2014 Awards and 2015 Board of Directors election that was held at Wildflower Country Club. We had an excellent turn out! The 2015 TABA Board of Directors was presented to the membership and elected by acclamation.

2015 TABA Board of Directors

- David Patterson, President
- Patrick Johnson, Vice President
- Mike Pilkington, Secretary
- Jerry Tyroch, Treasurer
- Jason Carothers, Past President

Robbie Johnson, Director
Jamey Secrest, Director
Jared Bryan, Director
Joel Berryman, Director
Megan Kiella, Director
Timm White, Director



We also took this opportunity to recognize some of our members without whom we would not have had a successful 2014.

The **TABA Sponsor of the Year** award and the **TABA Associate Member of the Year** award went to **Weldon Vybiral - Tri-Supply**. Weldon and Tri-Supply participated in and sponsored multiple events throughout the year and were invaluable partners in the construction of the TABA Showcase Home. Thanks Weldon!

The **TABA Builder of the Year** award went to **Mike Pilkington**. Mike served as the Government Affairs Committee Chairman and the Board of Directors. Mike has also served on City Boards and Commissions. Mike participated in and supported TABA events throughout the year and is an outstanding advocate for our industry. Thanks Mike!

The **President's Award of Excellence** was presented to **Cheryl Hunka**. Cheryl was selected for this award to recognize her continued support and dedication to TABA's success. Cheryl was instrumental in facilitating the transition of new staff and continues to serve on TABA event committees. Thanks Cheryl!

Please join TABA and express your thanks to our 2014 Award winners for their outstanding support and dedication to your association!

We also want to recognize the 2015 Texas Association of Builders President - Steve Sorrells of Sorrells Development in Waco, Texas. Congrats Steve!



[On The Level - Table Of Contents](#)

<p><i>Serving Central Texas for over 50 years!</i></p> <p>NORMAN BUILDING MATERIALS, INC.</p> <p>South Main – Interstate 35 P. O. Box 576 Belton, TX 76513</p> <p>Frank Norman Office (254) 939-5132 Mobile (254) 534-2532 Fax (254) 939-7213</p>	<p>FIRST COMMUNITY TITLE</p> <p><i>...real people, real service.™</i></p> <p><i>Serving all of Bell and Coryell Counties</i></p> <p>Temple 254.773.7750 Salado 254.947.8480 Harker Heights 254-699-1102 Georgetown 254-865-2114</p> <p>www.fcttx.com www.facebook.com/fcttx</p>	<p>LINDA CHAISON President lchaison@centralandtitle.com</p> <p>2005 Birdcreek Drive Suite 100 Temple, TX 76502 254.771.1346</p> <p>CENTRAL LAND TITLE COMPANY</p>
<p>PROPANE ★ THE CLEAR ALTERNATIVE FOR YOUR HOME ★ COOKING HEATING DRYING GAS LOGS GRILLING WATER HEATING</p> <p>STAR TEX PROPANE, INC.</p> <p>23330 S.E. H.K. Dodgen Loop • Temple, TX 76504 Toll Free (800)525-9205 Office (254)773-5717</p>	<p>Tri-Supply</p> <p>DOORS, MOULDINGS, COLUMNS & MORE</p> <p>Gary Vasek Mason Allen Kevin Lynch Randy Goeke David Gommert David Driver</p> <p>(254) 771-3500 500 East Ridge Blvd Temple, TX 76502</p>	<p>Lengsfeld Lumber Co.</p> <p><i>Serving Central Texas for over 50 years!</i></p> <p>Willie James Jim Crawford Danny Owens Bruce Walker</p> <p>8 N. 13th Street Temple, TX 76501 (254) 773-2609 Fax (254) 774-7660</p> <p><small>OWENS CORNING</small></p>

In collaboration with the TABA Government Affairs Committee, the City of Temple has updated its Plat Review Schedule to provide the applicant with additional time to review staff comments and allow staff additional review time. DRCs will convene on Mondays (City Staff) and Thursdays (City Staff with applicant). We will continue to work with our partners in the City of Temple to improve and refine this process for the benefit of all stakeholders. Thanks to Brian Chandler and City of Temple staff for your work on this and other DRC process amendments!

The entire 2015 DRC Schedule is available [here](#).

[On The Level - Table Of Contents](#)

<p>Consolidated Reinforcement, Inc.</p> <p>Post Tension - Rebar - Material - Labor</p> <p>Arthur Uresti Superintendent</p> <p>Belton (254) 939-0888 Victoria (512) 578-3569</p> <p>2016 So. Hwy Blvd. Belton, Texas 76513</p> <p>Laredo (512) 727-8228 Austin (512) 251-0606</p>	<p>MONTEITH Abstract & Title Co.</p> <p>Brad Turner Executive Vice President</p> <p>2010 Bird Creek Drive Suite 102 Temple, TX 76502</p> <p>(254) 773-9035 (254) 939-5791 FAX (254) 773-9247</p>
---	--



2015 Home & Garden

Temple Area Builders Assoc. SHOW

February 20, 21, and 22

The 2015 Home and Garden Show is right around the corner. There are still some booths available. Contact Regina at Regina@tahb.org or 254-773-0445 for more info.

Booth Price Guide available [here](#)

Show Layout available [here](#)

We are also still collecting material for the Builder Surplus Sale. If you have any items in your warehouse that you would like to donate to this sale and remove from your inventory, please contact us. This event will sell donated building materials to the general public attending the Home & Garden Show. Thanks again to Armadillo Box for your help in storing the materials!

For more information on the 2015 Builders Surplus Sale [click here!](#)

Thank you to our 2015 Marketing Partners! We are SOLD OUT of Show Partner packages! There is still the opportunity for you to market your business with a Banner advertisement placed in the Expo Hall during the show. Read more [here](#) and contact us to get your Banner today!

TDT logo



Please take a moment and check out our new members!

NEW Members

Heights Fence -- Royce Electric -- Perkins Home Repair & Remodeling -- Jubilee Homes II

Do Business with a member!

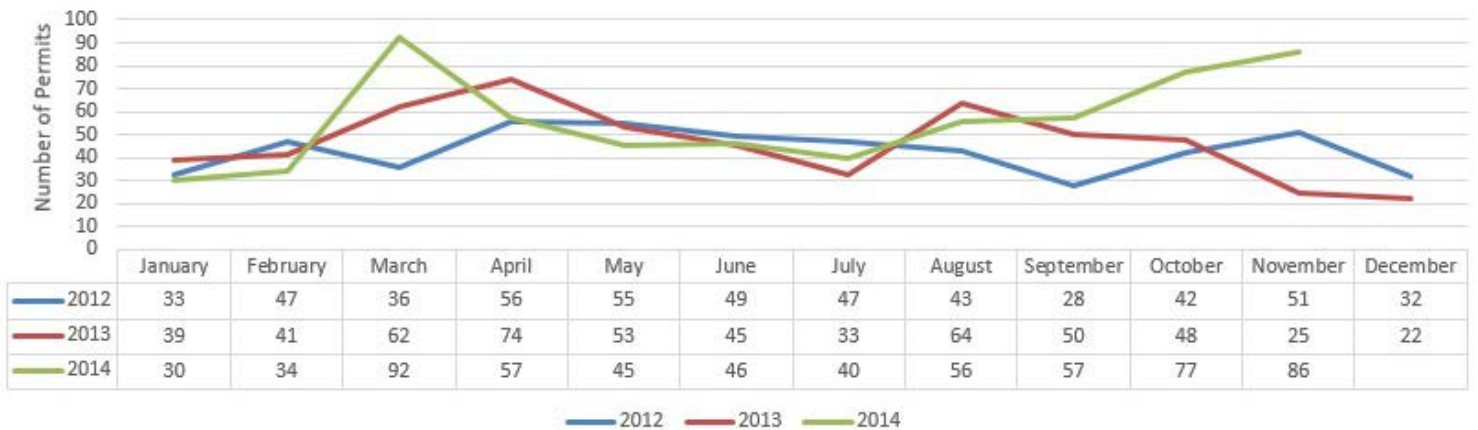
The TABA Board of Directors has set a goal to get back to 350 members by 2016 and that begins with our most valuable recruitment tools - our current members! TABA not only provides networking and marketing opportunities that help you promote your business, we also navigate the political waters to help provide a pro-business environment.

Are you encouraging the people that you do business with to join TABA? There is strength in numbers! If your industry doesn't have a strong voice, your business will be impacted one way or another. This could mean less infrastructure development or it could mean more regulation and higher fees. Either way, your ability to grow your business could be limited if you don't have an advocate in the halls of government.

I encourage you to engage your business associates, and have them join TABA so we can continue to move our industry forward! Contact us at info@tahb.org or 254.773.0445 for more information on how to refer your business associates, or to pass on leads regarding prospective members!

[On The Level - Table Of Contents](#)

New Single-Family Home & Duplex Permits Issued in Temple, TX (monthly)



New Single-Family Home & Duplex Permits Issued in Belton, TX (Cumulative)



[On The Level - Table Of Contents](#)



TABA HomePAC is the Political Action Committee of the Temple Area Builders Association. HomePAC works to promote and financially support candidates, issues and causes that are in the best interest of the community that TABA serves. With the funds that HomePAC generates, we support local initiatives and candidates that promote and enhance the ability to make a living in the homebuilding and related industries in East Bell County. Since '96 HomePAC has spent more than \$250,000 aligning ourselves with candidates and causes that are supportive of our industry. HomePAC funds are essential to assuring that TABA maintains a strong voice in the political arena and in assuring our community remains an attractive spot for continued development.

Please consider making a contribution to HomePAC today!

Thanks again to folks who sponsored and attended the HomePAC Elected Officials Night and the HomePAC Skeet Shoot!

2014 Elected Officials Night Sponsored By:

- Tri-Supply
- Masonite
- Southwest Moulding
- Air Control



HomePAC appreciates the support of all who participated in the Skeet Shoot and made it a success once again at Weber's Shooting Sports in Troy.



Boise Cascade



Don Ringler
CHEVROLET TOYOTA



&

All County Surveying Inc.

Milgard Windows and Doors

United Mirror and Glass

Temple Freightliner

Rusco Packaging

Baird, Crews, Schiller & Whitaker PC.

Simpson Strong Tie

Riley Scott Homes - Todd Scott

RT Schneider Construction

Jay Garrett

Wildflower Country Club

Jack Hilliard Distributing

&

Turley Associates Inc. Owens Corning Tall Tree Builder Sourcing Corp

[On The Level - Table Of Contents](#)

TABA Membership Spike Club Roster - Top 10

Jim Howe -- Omega -- 544 Credits

John Kiella -- Kiella Homebuilders -- 449 Credits

Charles Amos -- Amos Electrical Supply -- 266 Credits

Linda Strickel -- Bonded Builders Warranty Group -- 259 Credits

Curtis Lockey -- Lochridge-Priest -- 206 Credits

Jason Carothers -- Carothers Executive Homes -- 198 Credits

Dean Winkler -- CRW Construction -- 162 Credits

Cynthia Savage -- FIA TX -- 144 Credits

John Paysse -- John Paysse Properties -- 123 Credits

Robbie Johnson -- Stillwater Custom Homes -- 119 Credits

What is the Spike Club?

The NAHB Spike Club is composed of all of the individual members and employees of members in local associations who have attained Spike status. It is a vehicle to recognize these members for their outstanding achievements in member recruitment and retention in their local home builders association.

How do I earn Spike Credits?

Individuals earn Spike Credits by sponsoring new members, and by those new members retaining their membership. Spike credits have the following values: 1.0 credit for new Builder or Associate members and 0.5 credit for new council members, Affiliate memberships, and Builder and Associate renewal memberships.

What is one example of a Spike Club perk?

Other than bragging rights... Spikes can attend the NAHB Spike Party & Directors' Reception held each year during the International Builders' Show. The Spike Party & Director's Reception recognizes and honors Spikes across the country for their continued commitment to membership development. To qualify to attend the Spike Party & Director's Reception, each Spike must have a minimum of 6 credits and must earn at least one new member credit between November 1 2013 - October 31 2014.

[On The Level - Table Of Contents](#)

© 2016 Temple Area Builders Association
254-773-0445 257-774-7273 Fax
12 N. 5th Street P.O. Box 2002
Temple, TX 76501 Temple, TX 76503

