



[Click here to visit the TABA Homepage!](#)

On The Level - TABA On The Level August 2015

Contents:

- [2015 Calendar](#)
- [2015 HomePAC Clay Shootout - 24 September](#)
- [2016 Home & Garden Show](#)
- [TAB Builder & Remodeler Contracts](#)
- [New Definition of "Waters of the U.S." Became Effective August 28](#)
- [Permit Statistics](#)
- [Membership Corner](#)
- [Membership News and Initiatives](#)
- [Membership Benefit Overview](#)

**2015 Events**

- February 20 - 22 [Home & Garden Show](#) (@ [Bell County Expo Center](#))
- March 4 [Rally Day](#) (@ Texas State Capitol)
- March 27 [Crawfish Boil Event](#) (@ [Lamar Advertising Facility](#))
- April 16 [Parade of Homes Kickoff Party](#) (@ [Dead Fish Grill](#))
- April 17 - 19 [Parade of Homes](#) (Weekend 1)
- April 24 - 26 [Parade of Homes](#) (Weekend 2)
- May 8 [TABA Golf Tournament](#) (@ [Wildflower Country Club](#))
- June 5 [HomePAC Washers Tournament](#) (@ [Overlook Pavilion](#))
- September 24 [HomePAC Skeet Shoot](#) (@ [Weber's Outdoors](#), Troy)
- October 28 [Builder Luncheon on Risk Mitigation and Contracts](#)  
Sponsored by [StrucSure](#) (@ TABA)

**2016 Events**

- February 26 - 28 [Home & Garden Show](#) (@ [Bell County Expo Center](#))

[On The Level - Table Of Contents](#)

**Don Ringler**  
 CHEVROLET TOYOTA MERCEDES-BENZ  
 Let's Go Places  
[www.DonRinglerAutos.com](http://www.DonRinglerAutos.com)

**ACME BRICK**  
 Since 1891  
 5200 S. General Bruce Dr. Office 254-778-8088  
 Temple, TX Fax 254-778-2279

**Kohutek**  
 Engineering & Testing, Inc.  
 CONSULTING ENGINEERS **Gordon L. Kohutek, P.E.**  
 President  
 3200 East University Avenue, Georgetown, TX 78626  
 (off) 512-930-5832 • (fax) 512-930-5852

Home Loans | Construction Loans

**Extraco**  
 Banks. Extraordinary Starts Here

Member FDIC | [extracobanks.com](http://extracobanks.com) | 254.774.5500

**Gold Star**  
 Cabinets & Countertops  
 Granite, Quartz, Solid Surface, Showers  
 Office #: 512-251-9279 Fax #: 512-251-4445  
 Email: [gscabs@gmail.com](mailto:gscabs@gmail.com)  
 Account Reps:  
 Andrew Keown/ John Wells/ Dale Murrow  
[www.goldstarcabinets.com](http://www.goldstarcabinets.com)

**tBi**  
 TEXAS BRIGHT IDEAS  
 Lighting - Window Coverings  
 Ceiling Fans - Builders Hardware  
 HARKER HEIGHTS GEORGETOWN  
 254-699-2509 512-930-2005  
 EMAIL [TBi@HOT.RR.COM](mailto:TBi@HOT.RR.COM) • [WWW.TEXASBRIGHTIDEAS.COM](http://WWW.TEXASBRIGHTIDEAS.COM)



## 2015 SPORTING CLAY SHOOTOUT

*Sponsored By:*



WEBER'S SHOOTING CENTER · TROY, TX · Thursday, September 24, 2015

*Limited Sponsorship Opportunities Available  
Contact us for more information!*

*254-773-0445 or [info@tahb.org](mailto:info@tahb.org)*

- TEAMS: You may form your own four man team. Individual shooters will be placed on a team by the committee.
- AWARDS: 1st place team receives \$100 gift cards to Weber's Guns  
Door prizes for registered shooters: TBD (must be present to win)
- ENTRY FEE: \$500 Team Sponsorship: Includes 4 shooters, event shirt, lunch, dinner, and drinks following shoot. We accept check, or MC/Visa/Discover/Amex.
- Individual shooter registration is \$125

**Personal money and money from LLCs is preferred**

**TABA Home-PAC, the Temple Area Builders Association's political action committee, is dedicated to the protection, preservation, and furtherance of the private enterprise system and the strengthening of the American free institutions; and in particular, the development and advancement of the home building, remodeling, multi-family, and commercial construction industry.**

[2015 TABA HomePAC Sporting Clay Sponsorship Information and Registration Form](#)

[2015 TABA HomePAC Sporting Clay Team/Shooter Information and Registration Form](#)

Thank you 2015 TABA HomePAC Sporting Clay Shootout Sponsors

Lengefeld Lumber  
Keene Roofing  
Fairway Independent Mortgage - Brad Dragoo  
James Hardie  
Weyerhaeuser  
Topstone  
Blue Linx  
Cedar Creek  
Dallas Wholesale  
DW Distribution  
KPA Engineers  
Texas Association of Builders  
Boise Cascade

Simpson Strong Tie  
 All County Surveying  
 Prime Source  
 Kelly Moore Paint

On The Level - Table Of Contents

<p><i>Serving Central Texas for over 50 years!</i></p> <p><b>NORMAN BUILDING MATERIALS, INC.</b></p> <p>South Main – Interstate 35                  P. O. Box 576                  Belton, TX 76513</p> <p>Frank Norman Office (254) 939-5132                  Mobile (254) 534-2532 Fax (254) 939-7213</p>	<p><b>FIRST COMMUNITY TITLE</b></p> <p><i>...real people, real service.</i></p> <p><i>Serving all of Bell and Coryell Counties</i></p> <p>Temple 254.773.7750                  Salado 254.947.8480                  Harker Heights 254-699-1102                  Gatesville 254-865-2114</p> <p>www.fcctx.com                  www.facebook.com/fcctx</p>	<p><b>LINDA CHAISON</b>                  President                  lchaison@centralandtitle.com</p> <p>2005 Birdcreek Drive Suite 100                  Temple, TX 76502                  254.771.1346</p> <p><b>CENTRAL LAND TITLE COMPANY</b></p>
<p><b>PROPANE</b></p> <p>★ THE CLEAR ALTERNATIVE FOR YOUR HOME ★                  COOKING HEATING DRYING GAS LOGS GRILLING WATER HEATING</p> <p><b>STAR TEX PROPANE, INC.</b></p> <p>23330 S.E. H.K. Dodgen Loop • Temple, TX 76504</p> <p>Toll Free (800)525-9205 Office (254)773-5717</p>	<p><b>Tri-Supply</b></p> <p>DOORS, MOULDINGS, COLUMNS &amp; MORE</p> <p>Gary Vasek Mason Allen                  Kevin Lynch Randy Goeke                  David Gommert David Driver</p> <p>(254) 771-3500 500 East Ridge Blvd Temple, TX 76502</p>	<p><b>Lengsfeld Lumber Co.</b></p> <p><i>Serving Central Texas for over 50 years!</i></p> <p><b>Willie James                  Jim Crawford                  Danny Owens                  Bruce Walker</b></p> <p>8 N. 13th Street Temple, TX 76501                  (254) 773-2609 Fax (254) 774-7660</p>

# 2016 Home & Garden Show

Temple Area Builders Assoc.

Planning for the 2016 Home & Garden Show has begun. Our 2016 Home & Garden Show Committee Chair - Deb Swift-Alejandro - is excited about this year's show and the committee will be looking to improve on the success of the 2015 show.

If you are not familiar with the Home & Garden Show, please contact us at 254-773-0445 or [info@tahb.org](mailto:info@tahb.org). We would love to tell you more about this opportunity to showcase your business to thousands of local consumers who attend the show looking for ideas and information about their Home & Garden needs!

**There is no better way to reach 4500 potential customers in one weekend and show them what you have to offer.**

The 2016 Show Registration Packet is available [here](#) for any potential exhibitors seeking information.

On The Level - Table Of Contents

<p><b>Consolidated Reinforcement, Inc.</b></p> <p>Post Tension - Rebar - Material - Labor</p> <p><b>Arthur Uresti</b>                  Superintendent</p> <p>Belton (254) 939-0888                  Victoria (512) 578-3569</p> <p>2016 So. Hwy Blvd.                  Belton, Texas 76513</p> <p>Laredo (512) 727-8228                  Austin (512) 251-0606</p>	<p><b>MONTEITH Abstract &amp; Title Co.</b></p> <p><b>Brad Turner</b>                  Executive Vice President</p> <p>2010 Bird Creek Drive Suite 102                  Temple, TX 76502</p> <p>(254) 773-9035                  (254) 939-5791                  FAX (254) 773-9247</p>
--	--

**LOCHRIDGE PRIEST**  
 HEATING • AIR CONDITIONING • PLUMBING

**LENNOX**

3149 Kegley Lane  
 Temple Texas 76502 • 254.773.0003  
 TACLA24360C / M-41036



**2015-2017**  
Texas Residential Construction Contracts Package  
**Order Online**

New Contracts Available **September 1, 2015**  
Order Online at **www.TexasBuilders.org**

**TEXAS ASSOCIATION OF BUILDERS**  
Available only to builder and remodeler members of the Texas Association of Builders, TAB's contracts package subscription is your blueprint for typical construction and remodeling transactions in the State of Texas. At a cost of only \$299.99 plus tax\*, the package of contracts and related addenda is a fantastic value and can save you thousands of dollars in legal fees. As always, the subscription includes any needed updates that may occur during the two year cycle.  
\*The contracts package will cost \$399.99 plus tax after December 31, 2015.

**TAB's 2015-2017 Residential Construction Contracts available NOW**

As a member of TABA, you are also a member of the Texas Association of Builders (TAB). As a benefit of your builder/remodeler membership, you have the option of purchasing TAB's updated 201-2017 contracts package that will be available September 1, 2015. **Unlike other contracts packages, TAB's package reflects the most recent mandates coming out of the 2015 Texas Legislative Session and case law updates, in addition to a new design-build contract and architect addendum.** As always, the package will also be updated to include needed clarifications, various improvements and greater ease of use.

The TAB Contracts subscription is your blueprint for typical construction and remodeling transactions in the State of Texas. The package of contracts and related addenda is a fantastic value and can save you thousands of dollars in legal fees. The subscription includes any needed updates that may occur during the two year cycle.

The TAB Contracts will be available at <http://www.texasbuilders.org/membership/tab-contracts-package.html>

[On The Level - Table Of Contents](#)

**New Definition of "Waters of the U.S." Became Effective August 28**

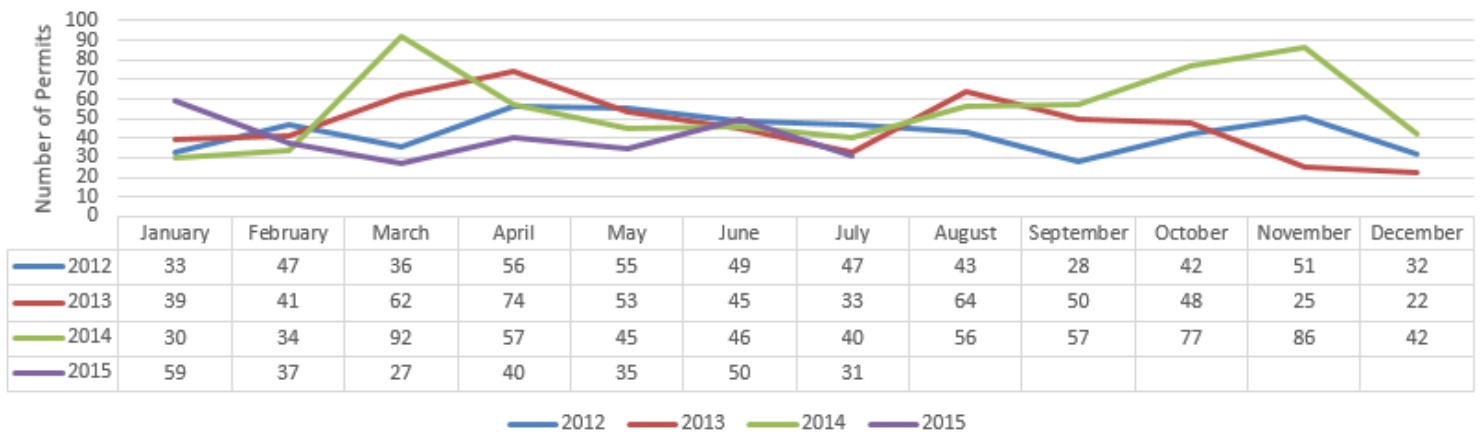
A major issue for builders, developers and property owners is the new definition of "waters of the U.S." under the Clean Water Act. The rule dramatically increases areas that can be claimed "waters of the United States" to include mudflats, isolated ponds and stock tanks and even man-made ditches, regardless of flow direction and rate.

It is important to take note, the final rule became effective on Aug. 28. The new rules can be confusing and are more restrictive. While more than 30 states have filed lawsuits, once the rule goes into effect, builders and developers will need to be aware of how it impacts them.

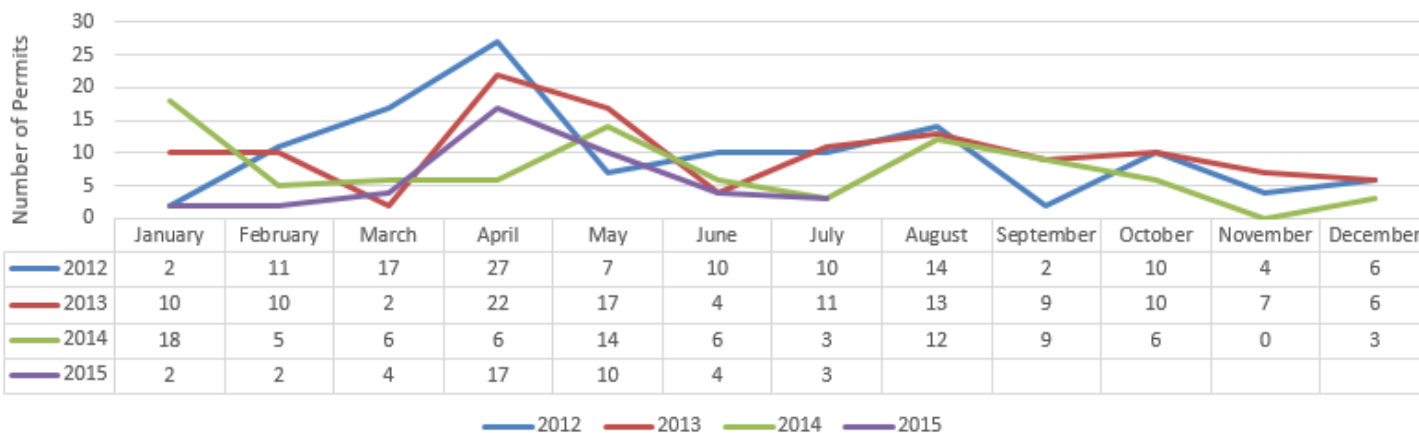
[Click here for a helpful fact sheet from the National Association of Home Builders on how to comply with "waters of the U.S."](#)

[On The Level - Table Of Contents](#)

**New Single-Family Home & Duplex Permits Issued in Temple, TX (monthly)**



## New Single-Family Home & Duplex Permits Issued in Belton, TX (monthly)



[On The Level - Table Of Contents](#)

### **Please take a moment and check out our new members!**

#### **NEW Members**

-- [Kelly-Moore Paint](#) --

#### **August 2015 Renewals**

The following companies have shown their commitment to the industry by renewing their memberships. Thank you!

-- [Brush Solutions](#) -- [B&R Equipment](#) -- [Baird, Crews, Schiller, & Whitaker](#) -- [Central Texas Housing Consortium](#) -- [Centraland Title](#) -- [House of Floors](#) -- [Kohutek Engineering & Testing](#) -- [Lamar Outdoor Advertising](#) -- [Rodney Dunn Co](#) -- [Russel Pajestka Roofing](#) -- [Stellar Properties](#) -- [Temple Daily Telegram](#) -- [Temple Winnelson](#) -- [Travis Tile](#) -- [Wilsonart](#) --

#### **Do Business with a member!**

Our current members are our most valuable recruitment tools! Are you encouraging the people that you do business with to join TABA? There is strength in numbers! If your industry doesn't have a strong voice, your business will be impacted one way or another. This could mean less infrastructure development or it could mean more regulation and higher fees. Either way, your ability to grow your business could be limited if you don't have an advocate in the halls of government.

TABA not only provides networking and marketing opportunities that help you promote your business, we also navigate the political waters to help provide a pro-business environment.

I encourage you to engage your business associates, and have them join TABA so we can continue to move our industry forward! Contact us at [info@tahb.org](mailto:info@tahb.org) or 254.773.0445 for more information on how to refer your business associates, or to pass on leads regarding prospective members!

[On The Level - Table Of Contents](#)

### **Membership News and Announcements**

Kelly-Moore Paint Company and the Texas Builders Foundation are excited to announce the establishment of the Kelly-Moore Paints Endowment to the Texas Builders Foundation. The \$125,000.00 endowment will provide scholarships to students who are enrolled in construction related programs in Texas' trade and technical schools and colleges and universities. Read more about this great news [here](#)

Do you have an announcement about your member company that you would like to share with the broader TABA membership? Contact us at [info@tahb.org](mailto:info@tahb.org) or 254-773-0445 to share.

## **Membership Initiative**

As part of a new membership initiative, we are asking our TABA Builder members to provide a list of the vendors and subcontractors that they do more than \$5,000 in annual business with. Upon receipt, TABA will determine who on your list is already an Associate member and who TABA and you should contact to become a member. You may think you are already doing business with a member - but they may not be! Let's increase the strength of our industry's voice by bringing in those vendors and subcontractors who aren't members yet.

Participants will earn credit, prizes, and recognition for recruiting new members that they do business with as well as increasing the percentage of TABA members they work with.

Submit your list of vendors and subcontractors today! This will provide TABA some solid leads for recruitment - and some builder members who can follow up with these vendors and subcontractors!

Associate members can participate too - just send us a list of folks you do business with who you think are members or who you think should be!

All information provided will be kept confidential - TABA will not share your information.

"Do Business With a Member"!

[Entry Form](#)

[On The Level - Table Of Contents](#)

## **Membership Benefits**

### **Member Rebate Program**

Are you taking advantage of the Texas Association of Builders (TAB) Member Rebate Program? You can save hundreds of dollars each quarter by applying for rebates offered by more than 40 housing industry product manufacturers. This simple process allows you to take advantage of manufacturer rebates, regardless of your volume.

Through the TAB Member Rebate Program, leading manufacturers pay rebates to builders and remodelers – a thank you to our members for your loyalty to their products. You may already be using many of these products, so sign up today to learn if you are eligible to receive quarterly rewards.

There is no fee to join. No receipts needed! Claim forms are now available for all homes, remodeling projects or multifamily units completed between January-June.

Deadline to submit is Aug. 21. Visit <http://www.hbarebates.com/tab.html> to learn more or call (866) 849-8900.



Find out more information about NAHB Private Offers, or search for your new vehicle at [Don Ringle Chevrolet](#), a long time TABA member and the exclusive [GM Business Elite Dealer](#) in the Waco/Temple/Killeen area!

You can always visit [www.nahb.org/ma](http://www.nahb.org/ma) to learn about these and additional member benefits and discounts!

**Lowe's** - Visit [www.LowesForPros.com/NAHB](http://www.LowesForPros.com/NAHB) or call 877-435-2440 and register to save 2% on your Lowe's Accounts Receivable (LAR) purchases and free delivery on purchases over \$500. Save an additional 5% every day at the store when they mention the 5% at time of purchase and when using their LAR.

**General Motors** - \$500 exclusive private offer on most Buick, Chevrolet and GMC vehicles. Business Owners receive a \$1000 private offer on select vehicles and may also qualify for additional incentives, visit [www.nahb.org/ma](http://www.nahb.org/ma) and click on the GM logo to find out more.

**AT&T, Verizon, Sprint & T-Mobile** - Savings up to 35% including a free analysis of new and existing plans. Program offers free mobile to ANY mobile, free mobile device management, dedicated help desk support, and much more. Visit [www.eMemberBenefits.com/NAHB](http://www.eMemberBenefits.com/NAHB) or call 866-430-NAHB (6242).

**2-10 Home Buyers Warranty** - Visit [www.2-10.com/NAHB](http://www.2-10.com/NAHB) or call 855-280-1328 to receive exclusive access to discounts on select products, including the Builder Backed Service Program and the systems and appliances warranty.

**AXA Equitable** - Offers full-service, low-cost retirement plans that can help reduce taxes while saving for life in retirement. Visit [www.axa.com/nahb](http://www.axa.com/nahb) or call 800-523-1125, option 3, department 2046 and mention NAHB.

**UPS Savings Program & YRC Freight** - UPS discounts of up to 36% on a broad portfolio of shipping services. Savings of at least 70% on less-than-truckload shipments 150 lbs. or more with UPS Freight and YRC Freight. Visit [www.1800members.com/NAHB](http://www.1800members.com/NAHB) or call 1.800.MEMBERS (800-636-2377) for more information.

**TransFirst** - Payment solutions with average savings of 16% per year. Web/mobile tools, credit card and eCheck processing and more. Free "Savings Analysis" call 800-613-0148 or visit [www.TransFirstAssociation.com/NAHB](http://www.TransFirstAssociation.com/NAHB).

**Dell** - Up to 30% off on all Dell computers. Call 800-757-8442 and Mention NAHB or visit [www.dell.com/nahb](http://www.dell.com/nahb)

**Associated Petroleum Products (APP)** - Earn \$0.015 for EVERY gallon purchased using the APP Fuel Card program. Visit [www.associatedpetroleum.com/nahb](http://www.associatedpetroleum.com/nahb) to enroll or call 800-929-5243, Option 6 & mention NAHB.

**GEICO** - Exclusive discounts for members on auto and home owners insurance. Visit [www.geico.com/disc/nahb](http://www.geico.com/disc/nahb) or call 800-368-2734 and mention NAHB for a free quote.

**Hertz** - Up to 20% off on rental cars and FREE Gold Plus Rewards membership. Visit [www.hertz.com/nahb](http://www.hertz.com/nahb) or call 800-654-2200 and use CDP# 51046.

**Avis** - Up to 25% off rental cars and FREE Avis Preferred Service membership at [www.avis.com/nahb](http://www.avis.com/nahb) or call 800-331-1212 and use AWD code G572900

**Budget** - Up to 20% off rental cars and FREE Budget Fastbreak at [www.budget.com/nahb](http://www.budget.com/nahb) or call 800-283-4387 and use BCD code Z536900

**Office Depot** - 10% off all delivery orders. Free shipping on orders of \$50 or more. Call 800-274-2753 mention NAHB.

**Omaha Steaks** - Save 10%, in addition to any online specials. [www.OSincentives.com/promo/nahb](http://www.OSincentives.com/promo/nahb)

**Endless Vacation Rentals** - 25% discount on over 200,000 vacation rentals worldwide. Call 877-782-9387 and mention NAHB at time of reservation or go to [www.endlessvacationrentals.com/nahb](http://www.endlessvacationrentals.com/nahb)

**Wyndham Hotel Group** - 15% off at over 7,400 hotels. Call 877-670-7088 and mention ID 8000002688. Go to [www.nahb.org/ma](http://www.nahb.org/ma) and click on the Wyndham logo to find out more

**FTD** - 20% off floral arrangements and gifts at [www.ftd.com/nahb](http://www.ftd.com/nahb) or call 800-SEND-FTD use code 17421

**NAHB Career Center** [www.nahb.org/careers](http://www.nahb.org/careers) - 20% off of standard rates for job posting & 15% off other HR services.

[On The Level - Table Of Contents](#)

254-773-0445      257-774-7273 Fax  
12 N. 5th Street      P.O. Box 2002  
Temple, TX 76501      Temple, TX 76503

