



[Click here to visit the TABA Homepage!](#)

On The Level - TABA On The Level July 2015

Contents:

- [2015 TABA Calendar](#)
- [New Staff Member at TABA](#)
- [Hamburger Cookout and Washers Tournament](#)
- [HomePAC Clay Shootout](#)
- [TABA Advocacy](#)
- [2016 Home & Garden Show](#)
- [TAB Builder & Remodeler Contracts](#)
- [Permit Statistics](#)
- [Membership Corner](#)
- [Membership News and Initiatives](#)
- [NEW Membership Benefit Highlights](#)
- [Business Note - Google Results](#)
- [OSHA Confined Spaces Rule](#)

**2015 Events**

- February 20 - 22 [Home & Garden Show](#) (@ [Bell County Expo Center](#))
- March 4 [Rally Day](#) (@ Texas State Capitol)
- March 27 [Crawfish Boil Event](#) (@ [Lamar Advertising Facility](#))
- April 16 [Parade of Homes Kickoff Party](#) (@ [Dead Fish Grill](#))
- April 17 - 19 [Parade of Homes](#) (Weekend 1)
- April 24 - 26 [Parade of Homes](#) (Weekend 2)
- May 8 [TABA Golf Tournament](#) (@ [Wildflower Country Club](#))  
[Golf Tournament Entry Form](#)
- June 5 [HomePAC Washer Tournament & TABA Member Event](#)  
(@ [Overlook Pavilion, Belton Lake](#))
- September 24 [HomePAC Clay Shootout](#) (@ [Weber's Outdoors, Troy](#))
- October 28 [Builder Luncheon on Risk Mitigation and Contracts](#)  
(@ TABA Office)

**2016 Events**

- February 26 - 28 [2016 Home & Garden Show](#) (@ [Bell County Expo Center](#))

[On The Level - Table Of Contents](#)

<p><b>Don Ringler</b> CHEVROLET TOYOTA ACURA Let's Go Places <a href="http://www.DonRinglerAutos.com">www.DonRinglerAutos.com</a></p>	<p><b>ACME BRICK</b> Since 1891 5200 S. General Bruce Dr. Office 254-778-8088 Temple, TX Fax 254-778-2279</p>	<p><b>Kohutek</b> Engineering &amp; Testing, Inc. CONSULTING ENGINEERS <b>Gordon L. Kohutek, P.E.</b> President 3200 East University Avenue, Georgetown, TX 78626 (off) 512-930-5832 • (fax) 512-930-5852</p>
<p>Home Loans   Construction Loans</p> <p><b>Extraco</b> Banks. Extraordinary Starts Here Member FDIC   <a href="http://extracobanks.com">extracobanks.com</a>   254.714.5500</p>	<p><b>Gold Star</b> Cabinets &amp; Countertops Granite, Quartz, Solid Surface, Showers Office #: 512-251-9279 Fax #: 512-251-4445 Email: <a href="mailto:gscabs@gmail.com">gscabs@gmail.com</a> Account Reps: Andrew Keovon/ John Wells/ Dale Murrow <a href="http://www.goldstarcabinets.com">www.goldstarcabinets.com</a></p>	<p><b>tBi</b> TEXAS BRIGHT IDEAS Lighting - Window Coverings Ceiling Fans - Builders Hardware HARKER HEIGHTS 254-699-2509 GEORGETOWN 512-930-2005 EMAIL <a href="mailto:TBIGHOT.RR.COM">TBIGHOT.RR.COM</a> • <a href="http://WWW.TEXASBRIGHTIDEAS.COM">WWW.TEXASBRIGHTIDEAS.COM</a></p>

Kacie Beevers, a born and raised Belton native, has joined our team here at TABA. We are confident her five plus years of experience in Commercial Real Estate, Associates of Business degree, Bachelors of Communications-Public Relations degree, and diverse professional background will make her an asset here at TABA and to you our members!

As an active member in the community serving on various committees and volunteer programs, she will offer unique insight and fresh ideas on continuing TABA's growth. Kacie enjoys challenges and tackling new projects with her friendly personality and can do attitude. She is excited to uphold and build new relationships at TABA.

Please join us in welcoming Kacie to TABA!

[On The Level - Table Of Contents](#)

*Serving Central Texas for over 50 years!*  
**NORMAN BUILDING MATERIALS, INC.**  
South Main – Interstate 35  
P. O. Box 576  
Belton, TX 76513  
Frank Norman Office (254) 939-5132  
Mobile (254) 534-2532 Fax (254) 939-7213



*Serving all of Bell and Coryell Counties*

Temple 254-773-7750  
Salado 254-947-8480  
Harker Heights 254-699-1102  
Gatesville 254-865-2114

www.fcctx.com  
www.facebook.com/fcctx

**LINDA CHAISON**  
President  
lchaison@centralandtitle.com  
2005 Birdcreek Drive Suite 100  
Temple, TX 76502  
254.771.1346  
**CENTRALAND**  
TITLE COMPANY

**PROPANE**  
★ THE CLEAR ALTERNATIVE FOR YOUR HOME ★  
Cooking Heating Drying Gas Logs Grilling Water Heating  
**STAR TEX**  
**PROPANE, INC.**  
23330 S.E. H.K. Dodgen Loop • Temple, TX 76504  
Toll Free (800)525-9206 Office (254)773-5717

**Tri-Supply**  
DOORS, MOULDINGS, COLUMNS & MORE  
Gary Vasek Mason Allen  
Kevin Lynch Randy Goeke  
David Gommert David Driver  
(254) 771-3500 500 East Ridge Blvd Temple, TX 76502

**Lengsfeld Lumber Co.**  
*Serving Central Texas for over 50 years!*  
**Willie James**  
**Jim Crawford**  
**Danny Owens**  
**Bruce Walker**  
8 N. 13th Street Temple, TX 76501  
(254) 773-2609 Fax (254) 774-7660  
OWENS CORNING  
INSULATION DIV. LENOIR

### 2015 Hamburger Cookout and Washers Tournament

Thanks to everyone who came out for our FREE Hamburger Cookout at Overlook Pavilion

Thanks to Jason Carothers and Mat Naegle for manning the pit on a warm June afternoon.

Big Thanks to Monteith for allowing us to use their rig!



**Congratulations to our 2015 TABA HomePAC Washers Tournament Winners**

**Eric Vybiral and Kevin Lynch of Tri-Supply!**



**Eric and Kevin also represented us at the Statewide Washers Tournament at the Gaylord Texan Resort in Grapevine. They competed ferociously but fell short of duplicating their first place finish. Too much time at the water park guys? Let's bring it home next year!**



**Thank you to all our local washers tournament participants and winners. Second Place was the Heart of Texas Landscaping and Irrigation team of Chris Armour and Eric Arch. Third Place was the Carothers Executive Homes team of Jason Carothers and Jason Peavy.**



**Thanks to our other Washers Tournament Participants:**

- Suncoast Post Tension - Justin Dixon and Travis Givens**
- Tri-Supply - David Driver and Mike Poncik**
- Tri-Supply - Billy Campbell and Chris Campbell**
- Tri-Supply - Chase Lynch and Peyton Vybiral**
- Carothers Executive Homes - Jared Bryan and Kevin Goldston**
- Lengefeld Lumber - Danny Owens and Willie James**
- Sparta Crane and Construction - Tony Gallagher and Ryan Smith**
- Lanette Wyrick and Brad Wyrick**

<p>Consolidated Reinforcement, Inc. Post Tension - Rebar - Material - Labor</p> <p><b>Arthur Uresti</b> Superintendent</p> <p>Belton (254) 939-0888 Victoria (512) 578-3569</p> <p>2016 So. Hwy Blvd. Belton, Texas 76513</p>	<p><b>CRI</b></p> <p>Laredo (512) 727-8226 Austin (512) 251-0606</p>	<p><b>MONTEITH</b> Abstract &amp; Title Co.</p> <p><b>Brad Turner</b> Executive Vice President</p> <p>2010 Bird Creek Drive Suite 102 Temple, TX 76502</p> <p>(254) 773-9035 (254) 939-5791 FAX (254) 773-9247</p>
---	--	--

 **LOCHRIDGEPRIEST**  
HEATING • AIR CONDITIONING • PLUMBING

 **LENNOX**

3149 Kegley Lane  
Temple Texas 76502 • 254.773.0003  
TACLA24360C / M-41036



## 2015 SPORTING CLAY SHOOTOUT

*Sponsored By:*



**WEBER'S SHOOTING CENTER • TROY, TX • Thursday, September 24, 2015**

*Limited Sponsorship Opportunities Available  
Contact us for more information!*

*254-773-0445 or [info@tahb.org](mailto:info@tahb.org)*

- TEAMS:** You may form your own four man team. Individual shooters will be placed on a team by the committee.
- AWARDS:** 1st place team receives \$100 gift cards to Weber's Guns  
Door prizes for registered shooters: TBD (must be present to win)
- ENTRY FEE:** \$500 Team Sponsorship: Includes 4 shooters, event shirt, lunch, dinner, and drinks following shoot. We accept check, or MC/Visa/Discover/Amex.

Individual shooter registration is \$125

**Personal money and money from LLCs is preferred**

**TABA Home-PAC, the Temple Area Builders Association's political action committee, is dedicated to the protection, preservation, and furtherance of the private enterprise system and the strengthening of the American free institutions; and in particular, the development and advancement of the home building, remodeling, multi-family, and commercial construction industry.**

**[REGISTRATION FORM AVAILABLE HERE](#)**

## **TABA Advocacy**

The closing of the 84th legislative session brought several victories for the home building industry thanks to advocacy provided by the Texas Association of Builders and the Temple Area Builders Association. Bills that were a priority of the Association have now been signed into law by the Governor. A summary of priority legislation this session is below.

We are also actively monitoring the ongoing "waters of the United States" rule the EPA is trying to enforce. Your national representation at NAHB is fighting hard to combat this unnecessary expansion of government regulation. A summary of this activity is below the 84th Legislature Bill Summary.

### **84th Legislature Bill Summary**

#### **HB 1736 - Energy Code Bill**

Relating to building energy efficiency performance standards.

*Establishes a 6-year minimum cycle for energy code updates by the State of Texas for residential construction. Sets reasonable alternate performance path Energy Rating Index scores for compliance with the state energy code.*

Signed by the Governor on June 16.

#### **HB 1455 - Condo Owner Protection Bill**

Relating to procedures required before a condominium association files a suit or initiates an arbitration proceeding for a defect or design claim.

*Provides condo unit owners with notice and an opportunity to vote on construction defect litigation brought by a condo board. Provides builders/developers with a right to make repairs prior to litigation.*

Signed by the Governor on June 17.

#### **HB 74 - Tax Credit Rural Definition Bill**

Relating to financial assistance administered by the Texas Department of Housing and Community Affairs (TDHCA) in certain rural areas.

*Directs TDHCA to develop rules to re-define certain "rural areas" for housing assistance/tax credit development.*

Signed by the Governor on June 18.

#### **SB 900 - TWIA Bill**

Relating to the operation of the Texas Windstorm Insurance Agency (TWIA).

*The lack of accessible and affordable windstorm coverage along the coast would have a devastating effect on Texas' economy. This bill allows the opportunity for Texas to address this issue by including incentives to bring private insurance coverage back into the market and by funding TWIA reserves in a fair, consistent and even manner.*

Signed by the Governor on June 16.

#### **HB 2187 - Metal Theft Bill**

Relating to the regulation of metal recycling entities.

*To address metal theft, the bill requires recyclers to issue cash transaction cards to sellers of metal. Without an issued card a recycler would only be able to pay by check, money order or direct deposit.*

Signed by Governor on June 19.

## **HB 32 - Franchise Tax Relief Bill**

Relating to decreasing the rates of the franchise tax.

*Reduces the franchise/margins tax rate by 25%.*

Signed by the Governor on June 15.

## **"Waters of the United States" Update**

NAHB is calling on the Environmental Protection Agency (EPA) to immediately withdraw final regulations that would dramatically expand the definition of "waters of the United States" under the Clean Water Act.

This renewed call is based on new evidence that the U.S. Army Corps of Engineers believes EPA used flawed technical and scientific analysis in crafting the regulation that was so indefensible that the Corps demanded that it be distanced from the rule.

"It is bad enough that EPA would push through new regulations that would put millions of additional acres of private land under federal control, needlessly raise housing costs and add more regulatory burdens to small businesses," said NAHB Chairman Tom Woods

"But it is absolutely scandalous that EPA disregarded the objections of the U.S. Army Corps of Engineers, which expressed strong concerns that the rule was arbitrarily written, legally indefensible and would be extremely difficult to implement. We call on EPA to act immediately to withdraw this rule and put an end to this federal land grab."

Newly uncovered documents reveal that senior Corps officials concluded that the final water rule contains serious flaws, contradicts long-standing Clean Water Act legal principles and greatly differs from the proposed rule provided for public comment.

Moreover, as required by law, EPA failed to consult with state and local governments, confer with business stakeholders, comply with the requirements of the Regulatory Flexibility Act or produce an accurate cost-benefit analysis.

With the rule set to take effect on Aug. 28, Woods added that it will not only exacerbate regulatory uncertainty, but also impede the housing recovery and economic growth by vastly extending the areas in which home builders and other landowners are required to obtain wetlands permits.

"EPA has made a mockery of the regulatory process and clearly stopped at nothing to advance its environmental-activist agenda," said Woods.

"Even before it was known that the Corps so strongly disagreed with the final water rule, 34 states had formally requested that the rule be withdrawn and 31 state attorneys general had filed suit calling for the rule to be rescinded. EPA must act in the best interests of the American public and terminate this rule before it can take effect."

[On The Level - Table Of Contents](#)

---



Planning for the 2016 Home & Garden Show has begun. Our 2016 Home & Garden Show Committee Chair - Deb Swift-Alejandro - is excited about this year's show and the committee will be looking to improve on the success of the 2015 show.

If you are not familiar with the Home & Garden Show, please contact us at 254-773-0445 or [info@tahb.org](mailto:info@tahb.org). We would love to tell you more about this opportunity to showcase your business to thousands of local consumers who attend the show looking for ideas and information about their Home & Garden needs! There is no better way to reach 4500 people in one weekend and show them what you have to offer.

The 2016 Show Registration Packet is being mailed to all our past exhibitors this week. The packet is also available [here](#) for any potential new exhibitors seeking information.

[On The Level - Table Of Contents](#)

#### **TAB's 2015-2016 Residential Construction Contracts will be available September 1st**

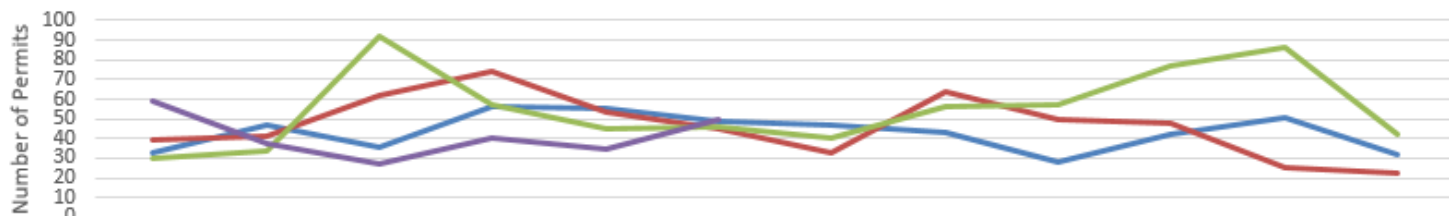
As a member of TABA, you are also a member of the Texas Association of Builders (TAB). As a benefit of your builder/remodeler membership, you have the option of purchasing TAB's updated 201-2016 contracts package that will be available September 1, 2015. **Unlike other contracts packages, TAB's package reflects the most recent mandates coming out of the 2015 Texas Legislative Session and case law updates, in addition to a new design-build contract and architect addendum.** As always, the package will also be updated to include needed clarifications, various improvements and greater ease of use.

The TAB Contracts subscription is your blueprint for typical construction and remodeling transactions in the State of Texas. The package of contracts and related addenda is a fantastic value and can save you thousands of dollars in legal fees. The subscription includes any needed updates that may occur during the two year cycle.

The TAB Contracts will be available at <http://www.texasbuilders.org/membership/tab-contracts-package.html>

[On The Level - Table Of Contents](#)

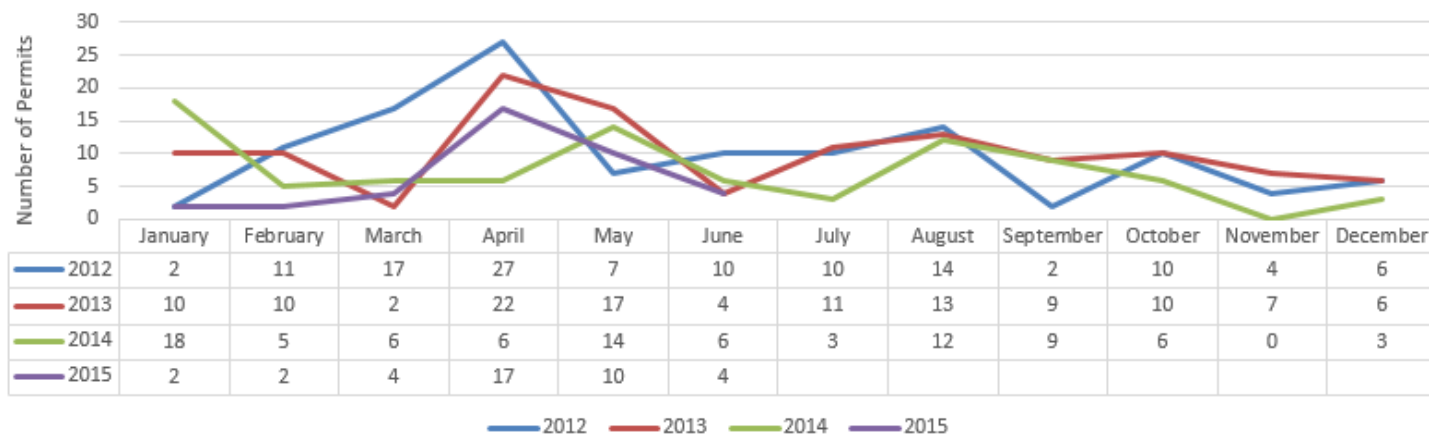
**New Single-Family Home & Duplex Permits Issued in Temple, TX (monthly)**



	January	February	March	April	May	June	July	August	September	October	November	December
2012	33	47	36	56	55	49	47	43	28	42	51	32
2013	39	41	62	74	53	45	33	64	50	48	25	22
2014	30	34	92	57	45	46	40	56	57	77	86	42
2015	59	37	27	40	35	50						

— 2012 — 2013 — 2014 — 2015

## New Single-Family Home & Duplex Permits Issued in Belton, TX (monthly)



[On The Level - Table Of Contents](#)

### **Please take a moment and check out our new members!**

#### **NEW Members**

**-- Classic Homes - Larry Jackson --**

**Do Business with a member!**

Our current members are our most valuable recruitment tools! Are you encouraging the people that you do business with to join TABA? There is strength in numbers! If your industry doesn't have a strong voice, your business will be impacted one way or another. This could mean less infrastructure development or it could mean more regulation and higher fees. Either way, your ability to grow your business could be limited if you don't have an advocate in the halls of government.

TABA not only provides networking and marketing opportunities that help you promote your business, we also navigate the political waters to help provide a pro-business environment.

I encourage you to engage your business associates, and have them join TABA so we can continue to move our industry forward! Contact us at [info@tahb.org](mailto:info@tahb.org) or 254.773.0445 for more information on how to refer your business associates, or to pass on leads regarding prospective members!

[On The Level - Table Of Contents](#)

### **Membership News and Announcements**

Congratulations to Scot Arey and the Solar CenTex team on the opening of their Solar CenTex Center and Warehouse at 1901 East FM 2410 in Harker Heights!

Don Bond, City Engineer for the City of Temple, announced that Richard Wilson has been promoted to Deputy City Engineer. Please join us in congratulating Richard!

Do you have an announcement about your member company that you would like to share with the broader TABA membership? Contact us at [info@tahb.org](mailto:info@tahb.org) or 254-773-0445 to share.

#### **Membership Initiative**



As part of a new membership initiative, we are asking our TABA Builder members to provide a list of the vendors and subcontractors that they do more than \$5,000 in annual business with. Upon receipt, TABA will determine who on your list is already an Associate member and who TABA and you should contact to become a member. You may think you are already doing business with a member - but they may not be! Let's increase the strength of our industry's voice by bringing in those vendors and subcontractors who aren't members yet.

Participants will earn credit, prizes, and recognition for recruiting new members that they do business with as well as increasing the percentage of TABA members they work with.

Submit your list of vendors and subcontractors today! This will provide TABA some solid leads for recruitment - and some builder members who can follow up with these vendors and subcontractors!

Associate members can participate too - just send us a list of folks you do business with who you think are members or who you think should be!

All information provided will be kept confidential - TABA will not share your information.

"Do Business With a Member"!

[Entry Form](#)

[On The Level - Table Of Contents](#)

## **Membership Benefit Highlight**

### **Member Rebate Program**

Are you taking advantage of the Texas Association of Builders (TAB) Member Rebate Program? You can save hundreds of dollars each quarter by applying for rebates offered by more than 40 housing industry product manufacturers. This simple process allows you to take advantage of manufacturer rebates, regardless of your volume.

Through the TAB Member Rebate Program, leading manufacturers pay rebates to builders and remodelers – a thank you to our members for your loyalty to their products. You may already be using many of these products, so sign up today to learn if you are eligible to receive quarterly rewards.

There is no fee to join. No receipts needed! Claim forms are now available for all homes, remodeling projects or multifamily units completed between January-June.

Deadline to submit is Aug. 21. Visit <http://www.hbarebates.com/tab.html> to learn more or call (866) 849-8900



Find out more information about NAHB Private Offers, or search for your new vehicle at [Don Ringle Chevrolet](#), a long time TABA member and the exclusive [GM Business Elite Dealer](#) in the Waco/Temple/Killeen area!

You can always visit [www.nahb.org/ma](http://www.nahb.org/ma) to learn about these and additional member benefits and discounts!

**Lowe's** - Visit [www.LowesForPros.com/NAHB](http://www.LowesForPros.com/NAHB) or call 877-435-2440 and register to save 2% on your Lowe's Accounts Receivable (LAR) purchases and free delivery on purchases over \$500. Save an additional 5% every day at the store when they mention the 5% at time of

purchase and when using their LAR.

**General Motors** - \$500 exclusive private offer on most Buick, Chevrolet and GMC vehicles. Business Owners receive a \$1000 private offer on select vehicles and may also qualify for additional incentives, visit [www.nahb.org/ma](http://www.nahb.org/ma) and click on the GM logo to find out more.

**AT&T, Verizon, Sprint & T-Mobile** - Savings up to 35% including a free analysis of new and existing plans. Program offers free mobile to ANY mobile, free mobile device management, dedicated help desk support, and much more. Visit [www.eMemberBenefits.com/NAHB](http://www.eMemberBenefits.com/NAHB) or call 866-430-NAHB (6242).

**2-10 Home Buyers Warranty** - Visit [www.2-10.com/NAHB](http://www.2-10.com/NAHB) or call 855-280-1328 to receive exclusive access to discounts on select products, including the Builder Backed Service Program and the systems and appliances warranty.

**AXA Equitable** - Offers full-service, low-cost retirement plans that can help reduce taxes while saving for life in retirement. Visit [www.axa.com/nahb](http://www.axa.com/nahb) or call 800-523-1125, option 3, department 2046 and mention NAHB.

**UPS Savings Program & YRC Freight** - UPS discounts of up to 36% on a broad portfolio of shipping services. Savings of at least 70% on less-than-truckload shipments 150 lbs. or more with UPS Freight and YRC Freight. Visit [www.1800members.com/NAHB](http://www.1800members.com/NAHB) or call 1.800.MEMBERS (800-636-2377) for more information.

**TransFirst** - Payment solutions with average savings of 16% per year. Web/mobile tools, credit card and eCheck processing and more. Free "Savings Analysis" call 800-613-0148 or visit [www.TransFirstAssociation.com/NAHB](http://www.TransFirstAssociation.com/NAHB).

**Dell** - Up to 30% off on all Dell computers. Call 800-757-8442 and Mention NAHB or visit [www.dell.com/nahb](http://www.dell.com/nahb)

**Associated Petroleum Products (APP)** - Earn \$0.015 for EVERY gallon purchased using the APP Fuel Card program. Visit [www.associatedpetroleum.com/nahb](http://www.associatedpetroleum.com/nahb) to enroll or call 800-929-5243, Option 6 & mention NAHB.

**GEICO** - Exclusive discounts for members on auto and home owners insurance. Visit [www.geico.com/disc/nahb](http://www.geico.com/disc/nahb) or call 800-368-2734 and mention NAHB for a free quote.

**Hertz** - Up to 20% off on rental cars and FREE Gold Plus Rewards membership. Visit [www.hertz.com/nahb](http://www.hertz.com/nahb) or call 800-654-2200 and use CDP# 51046.

**Avis** - Up to 25% off rental cars and FREE Avis Preferred Service membership at [www.avis.com/nahb](http://www.avis.com/nahb) or call 800-331-1212 and use AWD code G572900

**Budget** - Up to 20% off rental cars and FREE Budget Fastbreak at [www.budget.com/nahb](http://www.budget.com/nahb) or call 800-283-4387 and use BCD code Z536900

**Office Depot** - 10% off all delivery orders. Free shipping on orders of \$50 or more. Call 800-274-2753 mention NAHB.

**Omaha Steaks** - Save 10%, in addition to any online specials. [www.OSincentives.com/promo/nahb](http://www.OSincentives.com/promo/nahb)

**Endless Vacation Rentals** - 25% discount on over 200,000 vacation rentals worldwide. Call 877-782-9387 and mention NAHB at time of reservation or go to [www.endlessvacationrentals.com/nahb](http://www.endlessvacationrentals.com/nahb)

**Wyndham Hotel Group** - 15% off at over 7,400 hotels. Call 877-670-7088 and mention ID 8000002688. Go to [www.nahb.org/ma](http://www.nahb.org/ma) and click on the Wyndham logo to find out more

**FTD** - 20% off floral arrangements and gifts at [www.ftd.com/nahb](http://www.ftd.com/nahb) or call 800-SEND-FTD use code 17421

**NAHB Career Center** [www.nahb.org/careers](http://www.nahb.org/careers) - 20% off of standard rates for job posting & 15% off other HR services.

[On The Level - Table Of Contents](#)

Did you know search engine giant Google recently changed the way its system pulls up websites for mobile users? Companies that have a mobile-optimized website will show up in search results ahead of those that do not.

The new search algorithm will not affect searches on desktop and laptop computers, but with more and more consumers using mobile devices to surf the web, shop and do business, this change could have significant impacts on small businesses. For many home builders and building industry professionals, it could mean less consumer traffic, diminishing page views and fewer leads.

Companies that want to hold on to their ranking in search need to design their websites so that they load quickly and are easy to navigate on mobile devices. [Use this tool to test your website to see if it's mobile-friendly enough for Google.](#)

[On The Level - Table Of Contents](#)

---

## **OSHA CONFINED SPACES RULE**

Confined spaces, such as manholes, tanks, or sewers, are work areas that are not designed for continuous occupancy and may be difficult to exit in the event of an emergency. On May 4, 2015, OSHA issued a final rule to increase protection for construction workers in confined spaces.

**What is a confined space?** As defined by OSHA, a confined space has:

- Limited means of entry and/or exit
- Is large enough for a worker to enter it
- Is not intended for regular/continuous occupancy

**What are examples of locations where confined spaces may occur during home construction?** Examples of locations in home building confined spaces may include, but are not limited to: manholes, sewer systems, stormwater drains, water mains, crawl spaces, attics, heating, ventilation and air-conditioning (HVAC) ducts, and pits.

**What is a permit required confined space?** A permit required confined space is a space that may have a hazardous atmosphere, engulfment hazard, or other serious hazard, such as exposed wiring, that can interfere with a worker's ability to leave the space without assistance. Only workers assigned and trained to work in a permit required confined space may do so. A permit specifying safety measures and names of those permitted in the space must be written before any work can take place. Employers are also required to develop a written confined space program if workers will enter permit required confined spaces.

**How does the new final rule differ from the rules that previously applied to construction work performed in confined spaces?** The rule requires employers to determine what kinds of confined spaces their workers are in, what hazards could be there, how those hazards should be made safe, what training workers should receive, and how to rescue those workers if anything goes wrong.

**If I am a general contractor and hire a subcontractor to do work in a confined space. Do I have any responsibilities?** Yes, home builders, or controlling contractors as OSHA labels them, must discuss permit required confined spaces on the site and their hazards with subcontractors/employers whose employees will enter permit required spaces.

The rule makes the controlling contractor the primary point of contact for information about permit spaces at the work site. The controlling contractor passes information it has about permit confined spaces at the work site on to the employers whose employees will enter the spaces (entry employers). Likewise, entry employers must give the controlling contractor information about their entry program and hazards they encounter in the space, and the controlling contractor passes that information on to other entry employers. The controlling contractor is also responsible for making sure employers outside a space know not to create hazards in the space, and that entry employers working in a space at the same time do not create hazards for one another's workers.

When does the new rule go into effect? Aug. 3, 2015

**Additional information is available [here](#)**

[On The Level - Table Of Contents](#)

---

© 2016 Temple Area Builders Association  
254-773-0445      257-774-7273 Fax  
12 N. 5th Street      P.O. Box 2002  
Temple, TX 76501      Temple, TX 76503

